



## YH Collection™

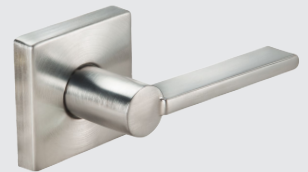
Superior light commercial quality with a lifetime limited finish and mechanical warranty.

- Easy install mounting system and square spindles simplify knob and lever installation
- Keyway: KW-1; SC-1, PARA optional
- Non-handed levers eliminate handing issues
- Removable levers/knobs and rosettes allow for easy scratch-free installation
- Premier series deadbolts are face removable for easy rekeying
- Heavy-duty shroud adds anti-pry robustness
- Solid brass key cylinder and housing
- Certified ANSI/BHMA Grade 2
- Deadbolts meet ADA guidelines
- 10 Designer Finishes

Knobs



Levers



Decorative Rosettes



Deadbolts



- Warranty: Limited Lifetime warranty on mechanical and finish when used in a single family home. Warranty for commercial, institutional, multi-family, and units other than single family dweller owned homes are 1 year finish; 3 years mechanical.

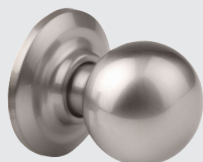


The World's Favorite Lock, Since 1840.™

## Knobs

## Levers

Bridgeport (BP)



Cambridge (CB)



Academy (AC)



Augusta (AL)



Dartmouth (DM)



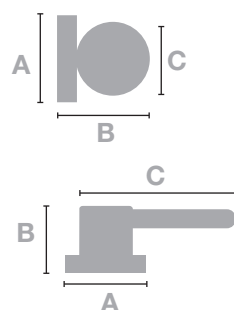
Oxford (XF)



Delaware (DW)



Kincaid (KC)



### FUNCTION

**KNOB/LEVER**

**DUMMY** 80/81

**PASSAGE** 10/11

**PRIVACY** 20/21

**ENTRY** 70/71

### ADA FUNCTIONS

**KNOB/LEVER**

**PRIVACY** 23

**ENTRY** 73

Marina (MA)



McClure (MC)



Monroe (MO)



Norwood (NW)



### DIMENSIONS

|                      | A       | B       | C        |
|----------------------|---------|---------|----------|
| <b>Bridgeport</b>    | 2 9/16" | 2 9/16" | 2"       |
| <b>Cambridge</b>     | 2 9/16" | 2 1/4"  | 2 5/64"  |
| <b>Dartmouth</b>     | 2 9/16" | 2 3/8"  | 2 1/2"   |
| <b>Oxford</b>        | 2 9/16" | 2 1/4"  | 2 1/8"   |
| <b>Academy</b>       | 2 9/16" | 2 7/16" | 4 19/64" |
| <b>Augusta</b>       | 2 9/16" | 2 1/2"  | 4 3/4"   |
| <b>Charleston</b>    | 2 9/16" | 2 1/2"  | 5 3/8"   |
| <b>Delaware</b>      | 2 9/16" | 2 3/4"  | 4 5/8"   |
| <b>Kincaid</b>       | 2 9/16" | 2 7/16" | 4 1/2"   |
| <b>Marina</b>        | 2 9/16" | 3 5/8"  | 4 7/8"   |
| <b>McClure</b>       | 2 9/16" | 2 7/16" | 4 3/16"  |
| <b>Milan</b>         | 2 9/16" | 2 7/16" | 4 1/16"  |
| <b>Monroe</b>        | 2 9/16" | 2 7/16" | 4 5/8"   |
| <b>Norwood</b>       | 2 9/16" | 2 1/2"  | 4 7/32"  |
| <b>Pacific Beach</b> | 2 9/16" | 2 7/16" | 4 3/4"   |
| <b>Valdosta</b>      | 2 9/16" | 2 1/2"  | 4 5/8"   |
| <b>Virgo</b>         | 2 9/16" | 2 9/16" | 4 1/2"   |

Valdosta (VL)



Valdosta Square  
Rose (VLSQ)



Decorative Rosettes



| DIMENSIONS  | WIDTH            | HEIGHT  | CENTER HOLE |             |               |
|-------------|------------------|---------|-------------|-------------|---------------|
| Oval        | 2 9/16"          | 4 7/32" | Oval        | 15/16" Knob | 1 1/32" Lever |
| Traditional | 2 9/16"          | 4 7/32" | Traditional | 15/16" Knob | 1 1/32" Lever |
| Modern      | 2 9/16"          | 3"      | Modern      | 1 1/32"     |               |
| Flat Round  | 2 9/16" Diameter |         | Flat Round  | 1 1/32"     |               |
| Flat Square | 2 9/16"          | 2 9/16" | Flat Square | 1 1/32"     |               |



| QuickShip™ Knob | US3 | US5 | US10BP | US10BE | US15 | US15A | US26 | US26D | GM | BSP |
|-----------------|-----|-----|--------|--------|------|-------|------|-------|----|-----|
| BRIDGEPORT      | •   |     |        |        | •    |       |      | •     |    |     |
| CAMBRIDGE       | •   | •   | •      |        | •    | •     | •    | •     | •  | •   |
| DARTMOUTH       | •   |     | •      |        | •    |       |      |       |    |     |
| OXFORD          |     |     | •      |        | •    |       |      |       |    |     |
| ROSETTE OPTION  |     |     |        |        |      |       |      |       |    |     |
| OVAL/TRAD       | •   |     | •      |        | •    |       |      |       |    |     |
| MODERN          |     |     | •      |        | •    |       |      |       |    | •   |



| QuickShip™ Lever | US3 | US5 | US10BP | US10BE | US15 | US15A | US26 | US26D | GM | BSP |
|------------------|-----|-----|--------|--------|------|-------|------|-------|----|-----|
| ACADEMY          |     | •   |        |        | •    |       |      | •     |    |     |
| AUGUSTA          | •   |     | •      |        | •    |       |      | •     |    |     |
| CHARLESTON       |     |     |        |        | •    |       |      | •     |    | •   |
| DELAWARE         |     |     |        |        | •    |       |      |       |    | •   |
| KINCAID          | •   |     | •      |        | •    |       |      |       |    |     |
| KINCAID/BLK      | •   |     | •      |        | •    |       |      |       |    |     |
| MARINA           |     |     | •      |        | •    |       | •    |       |    |     |
| McCLURE          | •   |     | •      |        | •    |       |      |       |    |     |
| MILAN            | •   |     |        |        | •    |       | •    |       |    |     |
| MONROE           |     |     |        |        |      |       |      | •     |    |     |
| NORWOOD          | •   | •   | •      |        | •    | •     | •    | •     | •  | •   |
| PACIFIC BEACH    | •   |     |        |        | •    |       |      | •     |    |     |
| VALDOSTA         |     |     | •      |        | •    |       | •    | •     |    | •   |
| VALDOSTA SQ      |     |     |        |        | •    |       |      | •     |    | •   |
| VIRGO            |     |     |        |        |      |       |      |       |    |     |
| ROSETTE OPTION   |     |     |        |        |      |       |      |       |    |     |
| OVAL/TRAD        | •   |     | •      |        | •    |       |      |       |    |     |
| MODERN           |     |     | •      |        | •    |       |      |       |    | •   |
| ROUND            |     |     | •      |        | •    |       | •    | •     |    |     |
| SQUARE           |     |     | •      |        | •    |       | •    | •     |    | •   |



# Deadbolts

## FUNCTION

### DEADBOLT

**SINGLE CYL PREM 82**

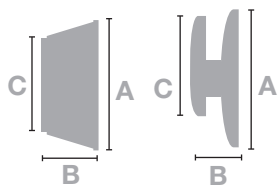
**SINGLE CYL 83**

**DOUBLE CYL 85**

**ONE WAY with PLATE 87**

## DIMENSIONS

|                           | A        | B       | C        |
|---------------------------|----------|---------|----------|
| <b>82 Single Exterior</b> | 2 19/32" | 1 1/8"  | 2"       |
| <b>82 Single Interior</b> | 2 19/32" | 1 9/64" | 1 31/32" |
| <b>83 Single Exterior</b> | 2 1/2"   | 1"      | 1 7/8"   |
| <b>83 Single Interior</b> | 2 1/2"   | 1 7/8"  | 2"       |



82 Premier  
Single Cylinder



83 Select  
Single Cylinder



85 Select  
Double Cylinder

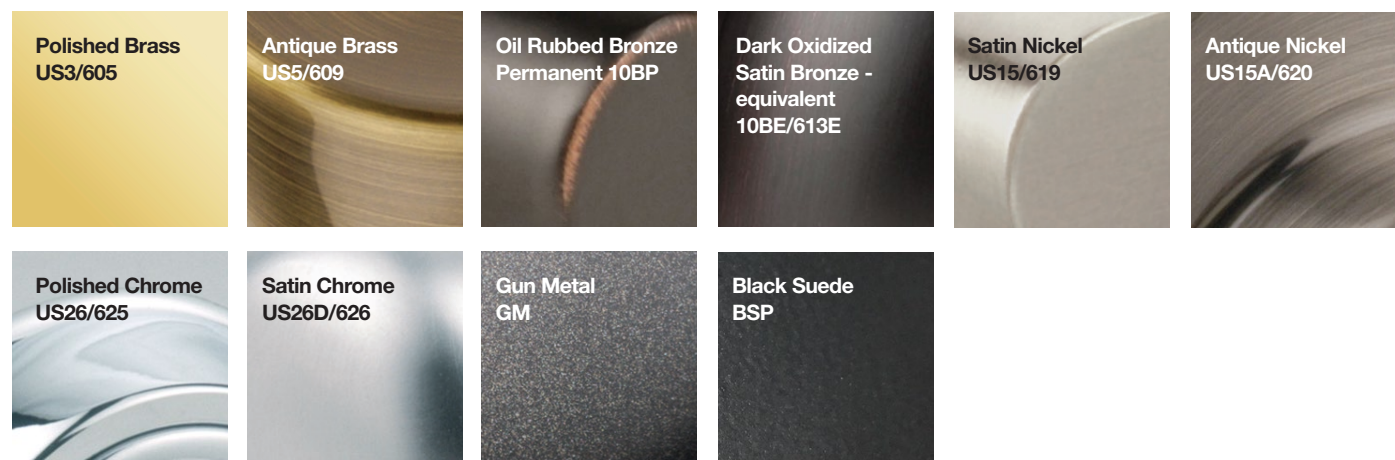


87  
One Way with Plate



| QuickShip™                | US3 | US5 | US10BP | US10BE | US15 | US15A | US26 | US26D | GM | BSP |
|---------------------------|-----|-----|--------|--------|------|-------|------|-------|----|-----|
| <b>SINGLE CYL PREM 82</b> | •   | •   | •      |        | •    | •     |      | •     |    | •   |
| <b>SINGLE CYL 83</b>      | •   |     | •      |        | •    | •     | •    | •     |    |     |
| <b>DOUBLE CYL 85</b>      | •   |     | •      |        | •    | •     |      |       |    |     |
| <b>ONE-SIDED 87</b>       |     |     |        |        |      |       |      |       |    |     |

# YH Collection Finishes



## Yale Locks & Hardware

225 Episcopal Road  
Berlin, CT 06037 USA  
YaleHome.com

Yale® is a registered trademark of ASSA ABLOY Residential Group. YH Collection™ is a trademark of ASSA ABLOY Residential Group. © Copyright 2019. All rights reserved. Reproduction in whole or in part without the express written permission of ASSA ABLOY Residential Group is prohibited.

YALE, with its unique global reach and range of products, is the world's favorite lock — the preferred solution for securing your home, family and personal belongings.

ASSA ABLOY is the global leader in door opening solutions, dedicated to satisfying end-user needs for security, safety and convenience.

## Community Service

Yale is Habitat for Humanity's national lockset partner and has helped families build strength, stability and self-reliance since 2001.



**Habitat**  
for Humanity®

